



Have a  
**great day**

---

**Be safe!**



**Intelex Mobile**

Intelex Technologies Inc.



5.0

Free



# Download



# Install

**URL:**

<https://clients.intelex.com/Login3/Sempra/>  
or use the QR Code →



**LOGIN:**

- Business email address
- Password of your business email address

# FINDINGS REPORT IN INTELEX TRAINING

Unsafe act and conditions

**GE-M02-E05-I04**

**Version: 01**

**Creation date:** Dec 12, 2023

**Modification date:** Dec 06, 2024

# HEALTH, SAFETY AND SECURITY DIRECTIVES TO SAVE LIVES



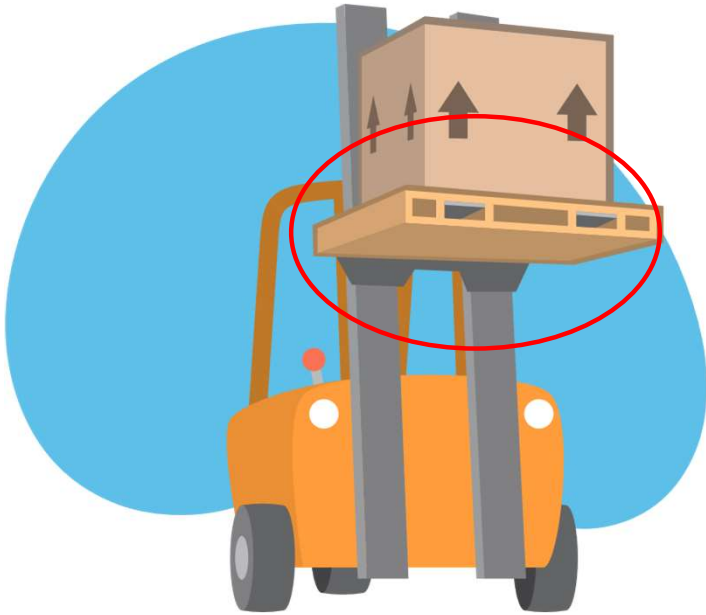
I must notify work related incidents and, intervene when unsafe acts and conditions are identified.

HEALTH, SAFETY AND SECURITY AS A GUIDING  
PRINCIPLE AND A CONDITION OF EMPLOYMENT.



# Terms

## UNSAFE CONDITION



Conditions resulting from the non-observance of the measures established as safe, and which may lead to the occurrence of an event.

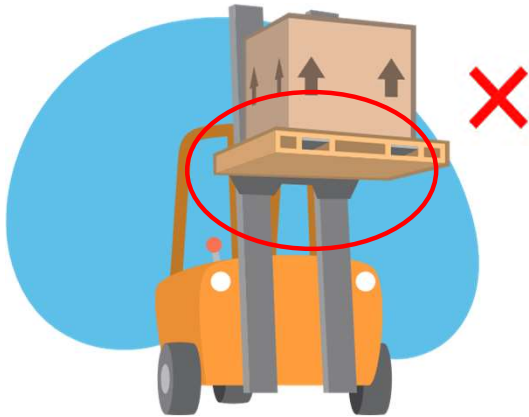
## UNSAFE ACT



Actions performed by the employee that imply an omission or violation of a work method or measure determined as safe.

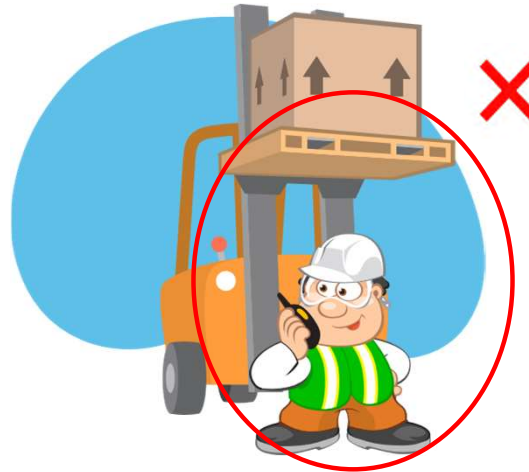
# Examples

## UNSAFE CONDITION



- ✗ Unattended material handling machine with a suspended load.
- ✗ Lack of delimitation.

## UNSAFE ACT



- ✗ Standing under a suspended load.

## SAFE



- ✓ Load at ground level.
- ✓ Workspace delimited.
- ✓ Employees following the safety controls.

# Example



## UNSAFE ACT

Standing under a suspended load.



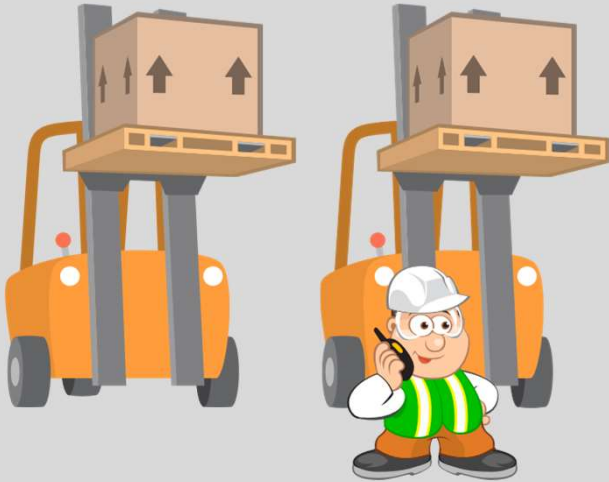
## SAFE

Outside the maneuvering radius and respect the delimitation.

# FINDING

Unsafe  
condition

Unsafe  
act



# INCIDENT

Incident  
**without** damages



Incident  
**with** damages



Injuries  
First aid and recordables.





**FINDING**

- Unsafe acts
- Unsafe conditions

**CONTINUOUS  
IMPROVEMENT**

**INCIDENT**

- Incidents without damages
- Incidents with damages
- Injuries

Communication of  
Findings and Incidents  
contribute to be a safer company.

# Approaches

The art of observation

**What are  
we seeing?**





# What is observed?



Watch



Listen

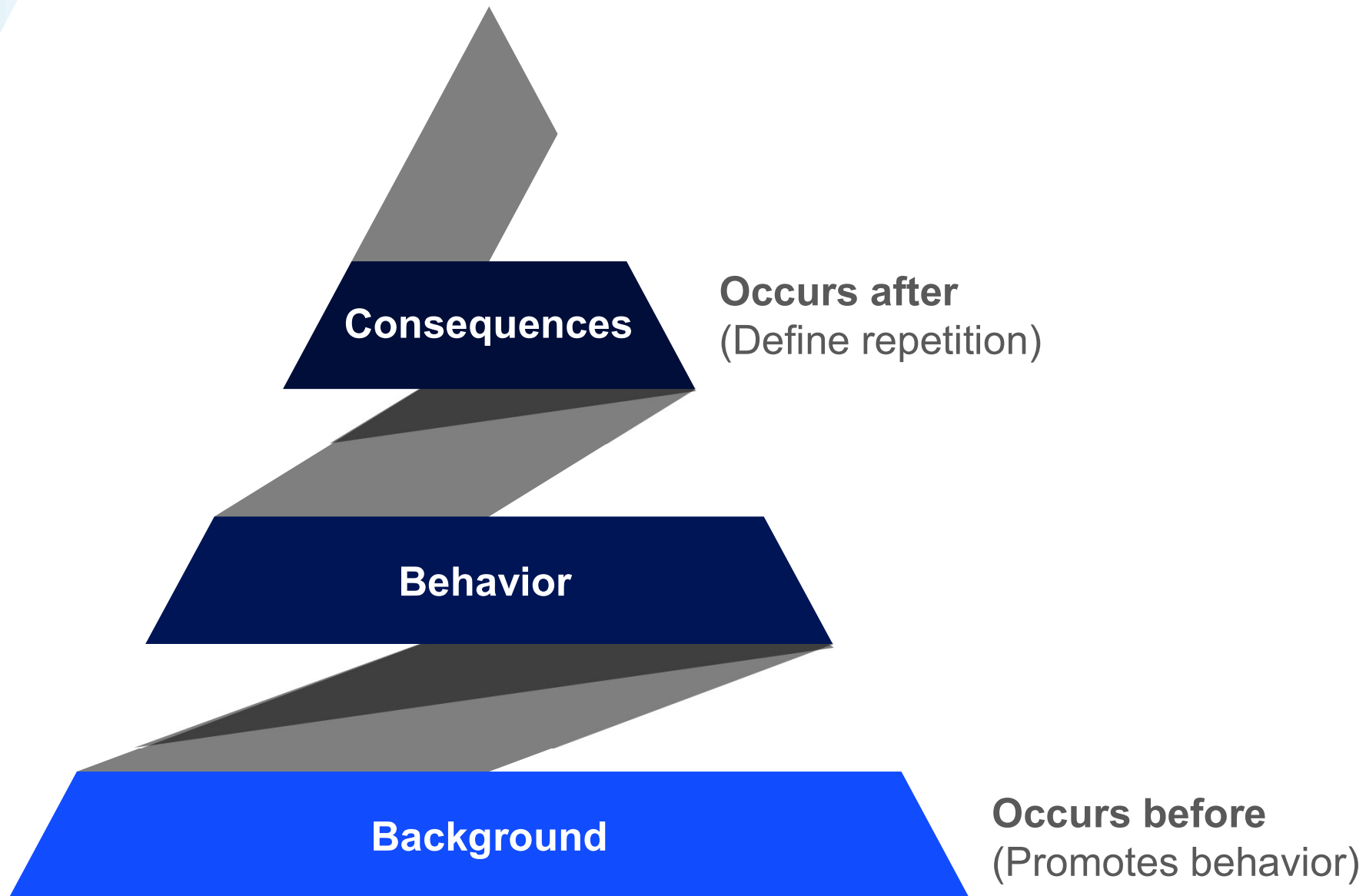


# Dialogue





# The logic of behavior



# Background



**Consequences**

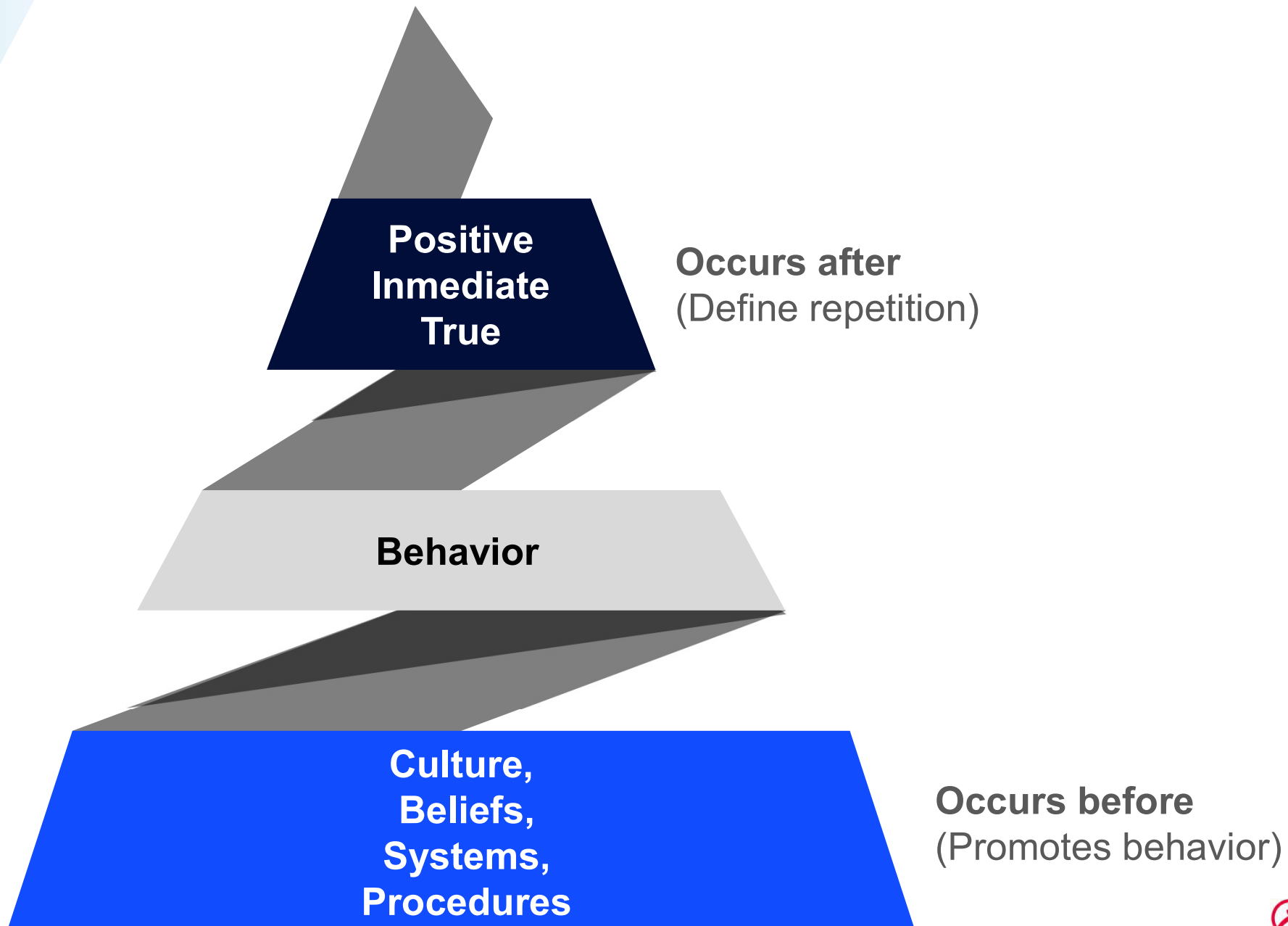
**Occurs after**  
(Define repetition)

**Behavior**

**Culture,  
Beliefs,  
Systems,  
Procedures**

**Occurs before**  
(Promotes behavior)

# Consequences



# Intention

**P**ositive  
**I**mmEDIATE  
**T**rue

Occurs after  
(Define repetition)

**Intention**

**Culture,  
Beliefs,  
Systems,  
Procedures**

Occurs before  
(Promotes behavior)



# Example



# I SEE, I FIX\*



## Safety is everyone's responsibility

- Promote immediate action whenever possible
- Build a high participation Safety Culture
- Prevent the occurrence of potential Incidents.

\* We solve situations within the scope of our function.

# STOP WORK AUTHORITY

Every employee (direct or contractor) has the **authority and responsibility** to stop work in case of imminent danger:

- Unsafe condition
- Unsafe act



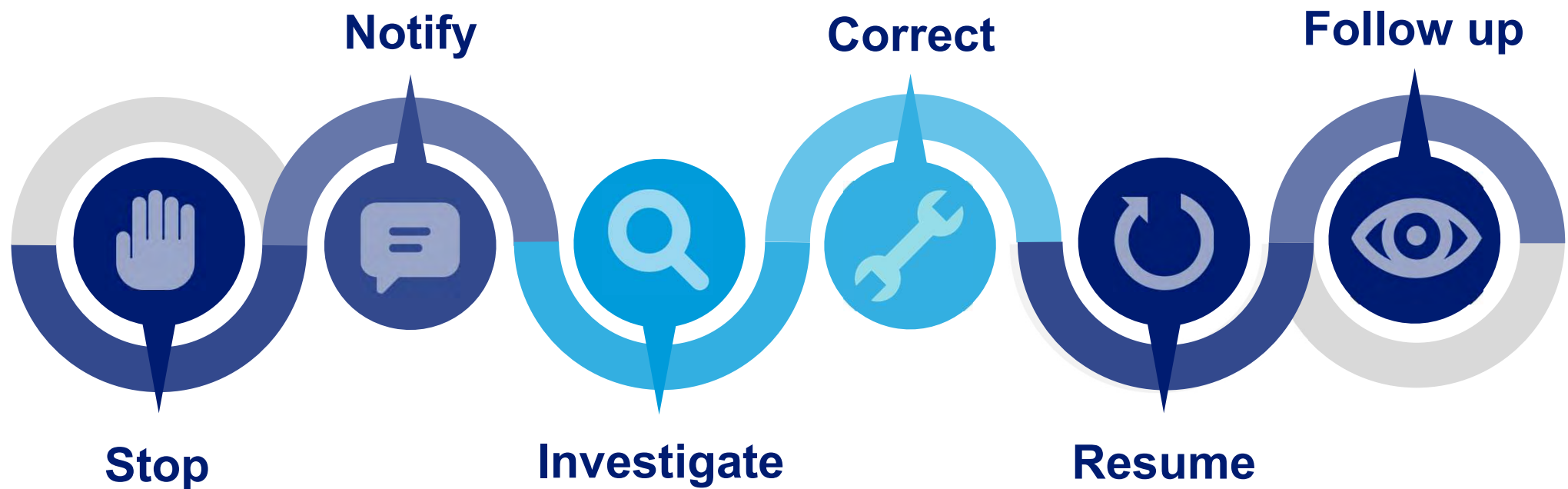
**SAY NO TO  
UNSAFE WORK**

A right and obligation



At Sempra Infrastructure we maintain the highest safety standards in our operations and construction projects.

# RIGHT, AUTHORITY AND OBLIGATION





# MOBILE APP FINDINGS

Functionalities

# INTELEX



# INTELEX

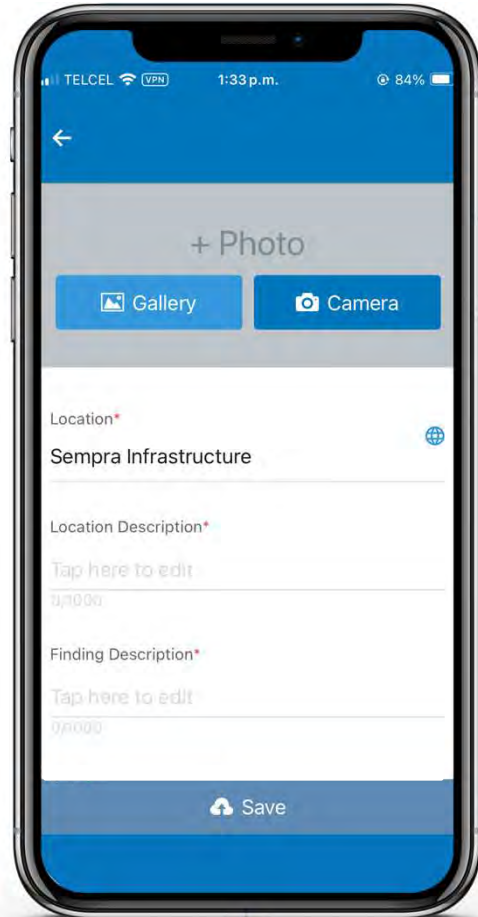
- ✓ Available for personal and company devices
- ✓ Offline
- ✓ Mobile and desktop version
- ✓ Languages: English and Spanish



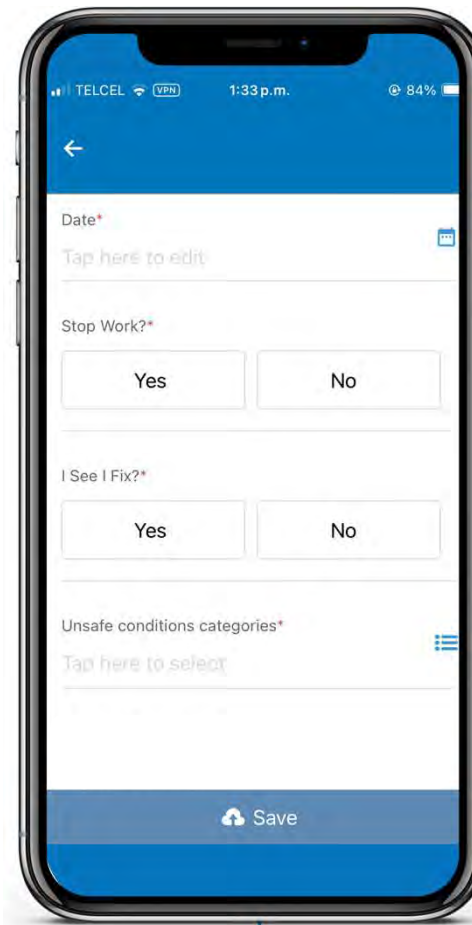
# Report a finding



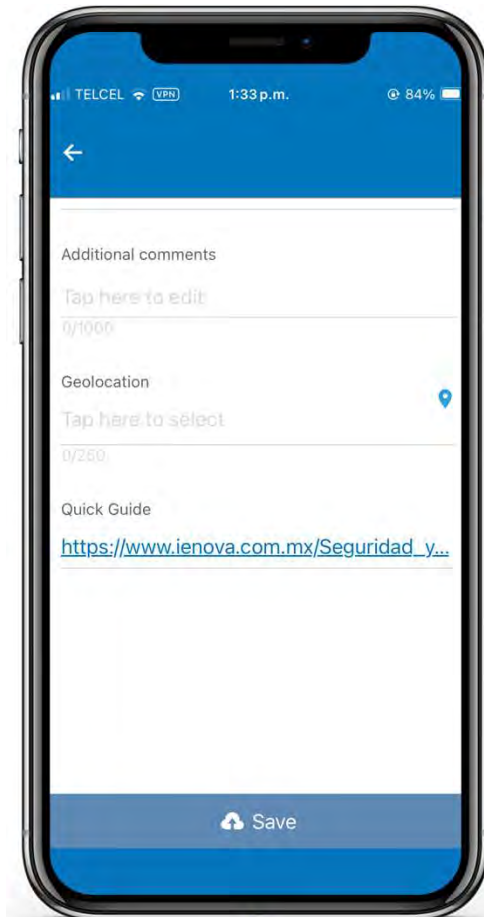
Choose the type of Finding



- Select "photo" to take an image that describes the finding
- Choose the location and describe the place where the finding was observed
- Describe the finding



- Select date and time where the finding was observed
- Indicate if the work was stopped
- Indicate if you saw it and fix it
- Categorize the Finding



- Additional comments
- Select the geolocation of the finding
- Support documents and materials available clicking on the quick guide link.



# Categories

## Unsafe acts



- PPE
- JSA
- Permit to work
- Procedures and documents
- Training, Competence and Credentials
- Collaborators (e.g., Crew, planning, horseplay)
- Fatigue
- Ergonomics
- **Driving**
- Tank car and tank trucks
- Heavy machinery and lifting vehicles
- Tool and machinery safeguarding
- Manual tools
- Line of fire
- Working at heights
- LOTO / LTT
- Hazardous fauna
- Alcohol and controlled substances
- Security
- Other



# Categories

## Unsafe conditions



- Facilities
- Aisle and stairs
- Order and cleanliness
- Storage
- Signage and delimitations
- LOTO / LTT
- Emergency systems
- Procedures and documents
- Vehicles (van, sedan, pick up)
- Tank car and tank trucks
- Heavy machinery and lifting vehicles
- Process Machinery and Equipment
- Tool and machinery safeguarding
- Manual tools
- Industrial hygiene (e.g., High temperatures, ventilation, illumination)
- Hazardous fauna
- Security
- Other

# Finding report

# Findings status

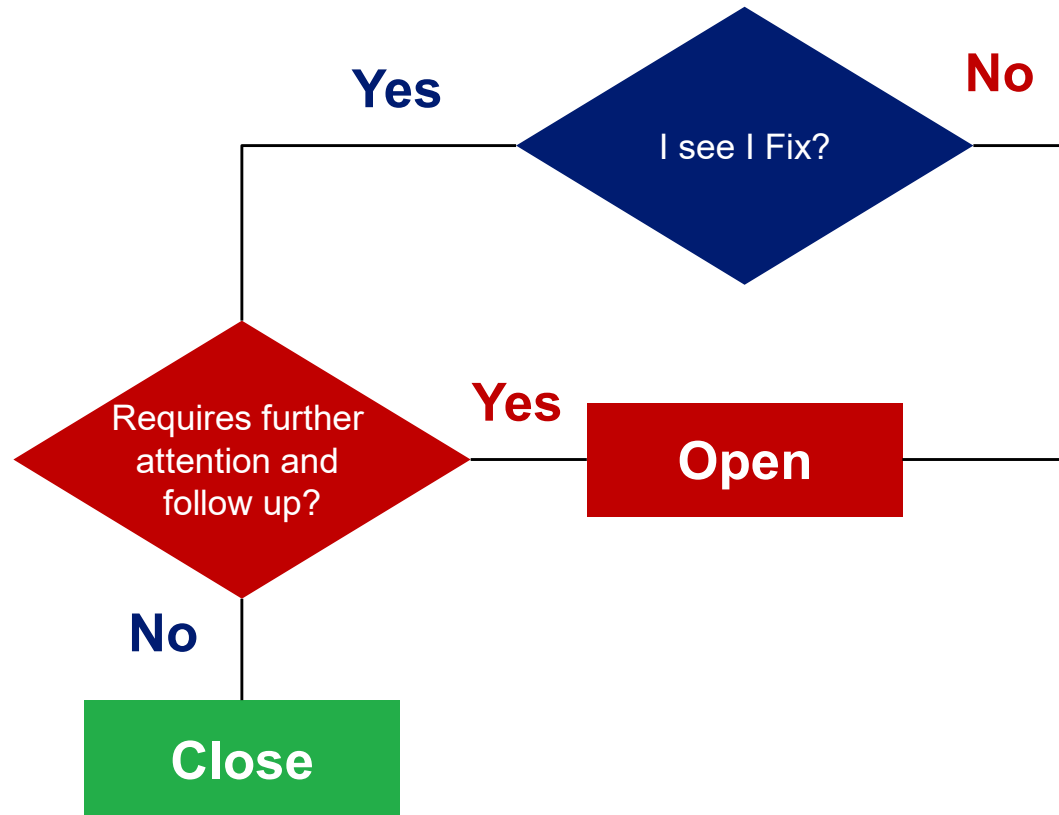


- Open
- In process
- Close



# Findings status workflow

A smartphone mockup displaying the 'Findings status workflow' form. The screen shows a blue header with a back arrow, status bar (TELCEL, VPN, 2:04 p.m., 81% battery), and two questions with toggle buttons. The first question is 'I See I Fix?' with a green 'Yes' button and a white 'No' button. The second question is 'Requires attention and follow-up?' with a white 'Yes' button and a red 'No' button. A blue 'Save' button is at the bottom.



## Notes:

- “Safe observations” status is “closed” by default
- The reporter is automatically designated as the responsible of the follow up

# Findings follow up



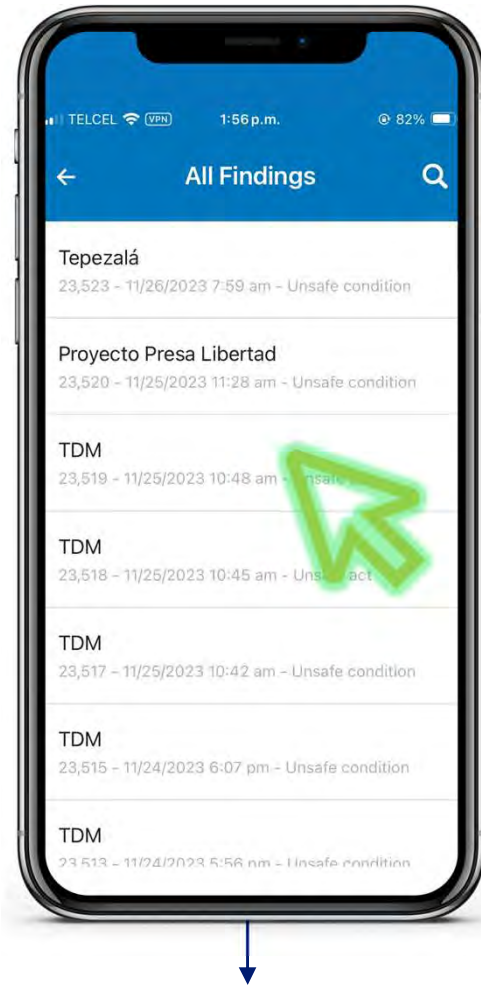
Will display the open findings reported by the user.  
(Status "Open" y "In review").

Will display all the findings of the location.  
(Any status).

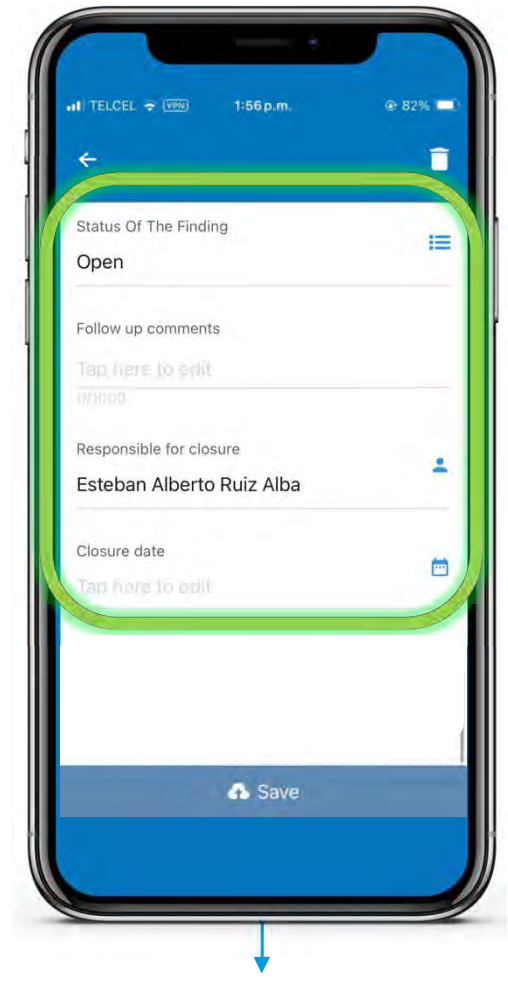
# Findings follow up



1. Click on "My open findings" or "All Findings"

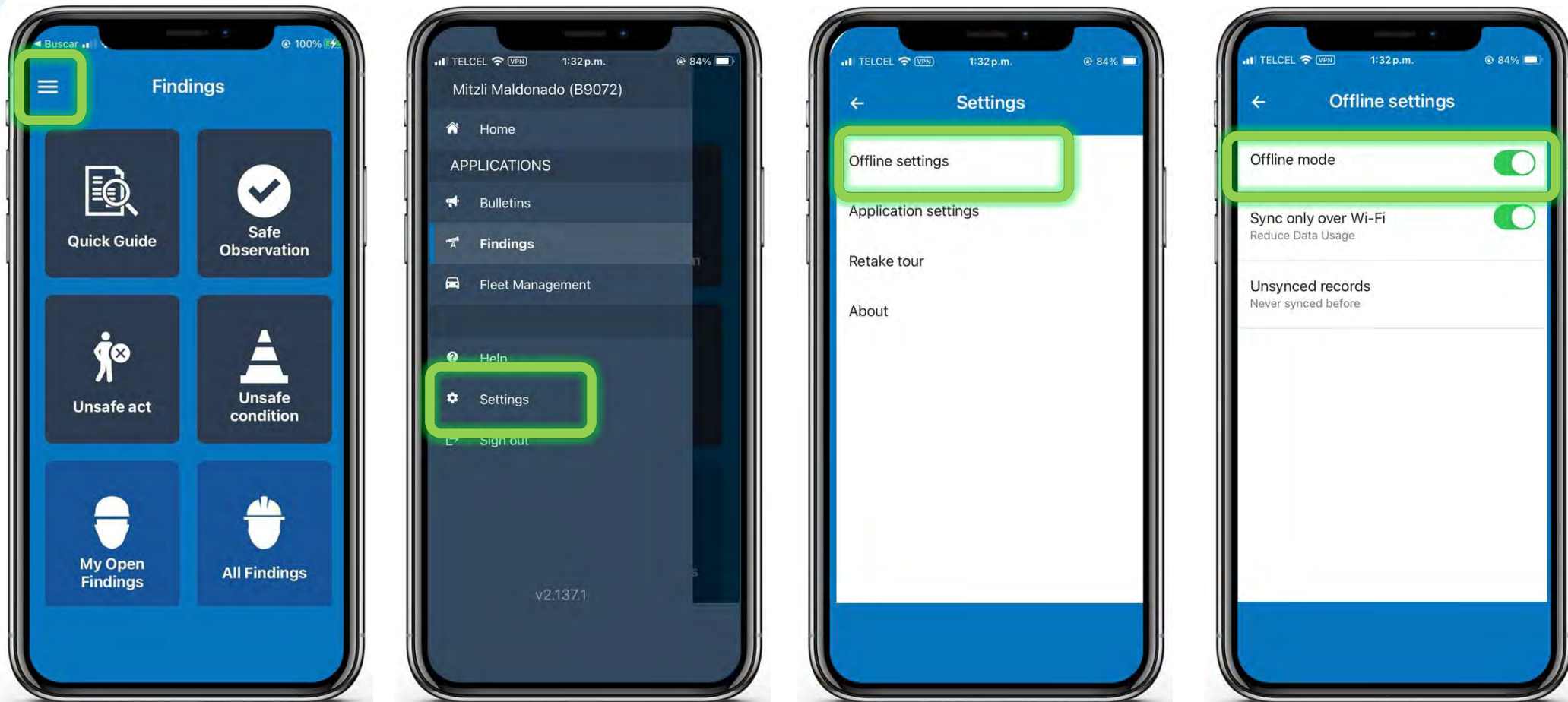


2. The reported findings will be displayed
3. Select the desire finding



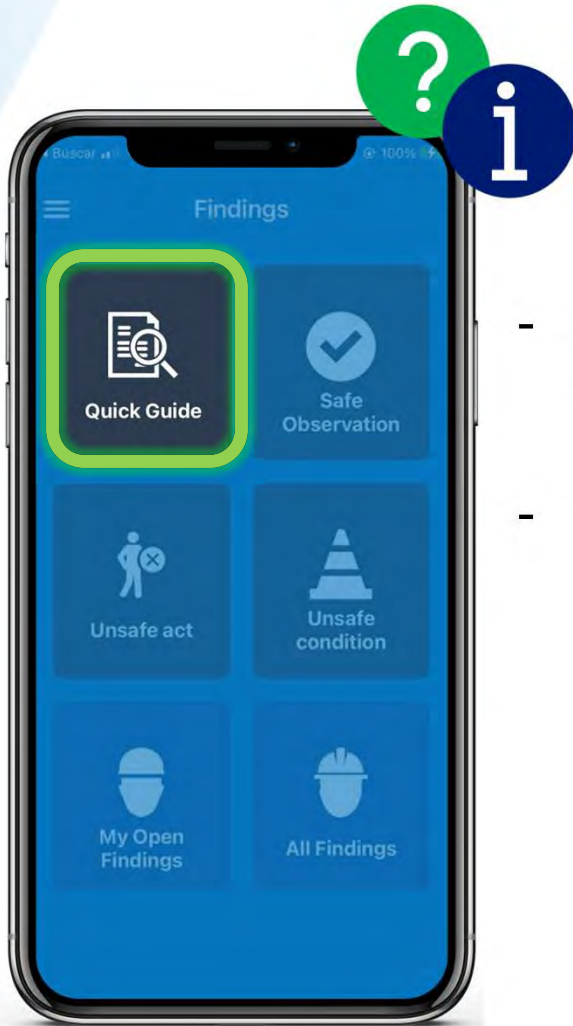
4. Complete the follow up information
5. If the follow up is concluded, update the status of the finding to "Closed"

# Offline setting





# Technical support



- See support documents and materials by clicking on the button “Quick guide”.
- Contact your Health and Safety representative.



Errors of the platform or users access management, send an email with the details and a screenshot, in case of errors, to [jbecerraz@sempraglobal.com.mx](mailto:jbecerraz@sempraglobal.com.mx)

# SEMPRA INFRAESTRUCTURA CITY WORKSHOP



## Instructions:

- Identify findings in the map
  - The scenarios are fictitious complete the report as at your discretion,
  - Think in actions to return it to a safe action or condition, so you can select “**yes**” in the field “(I See I Fix)” and describe the taken actions in “additional comments” section.

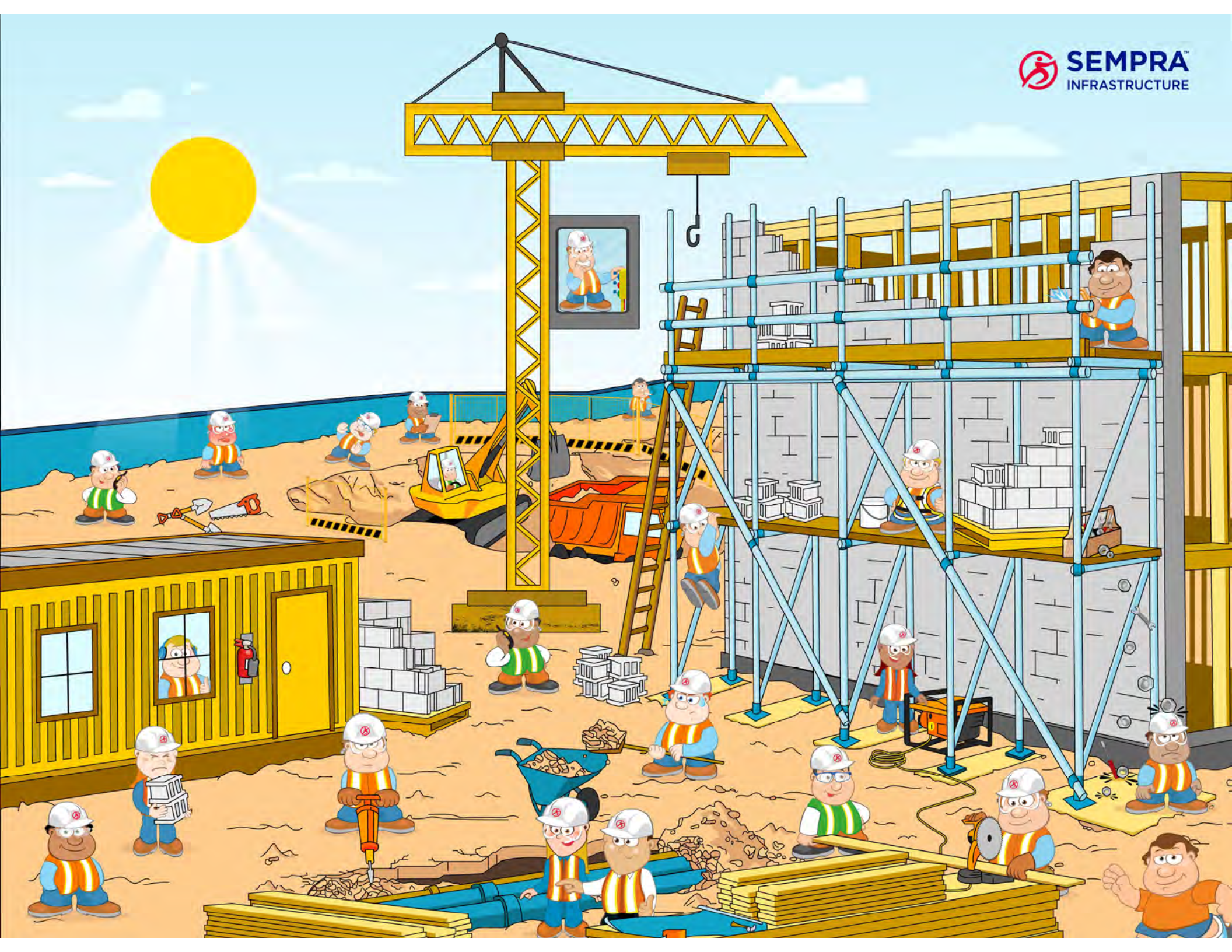
*Let's make this city a safer place to work!*



# SEMPRA INFRAESTRUCTURA CITY WORKSHOP







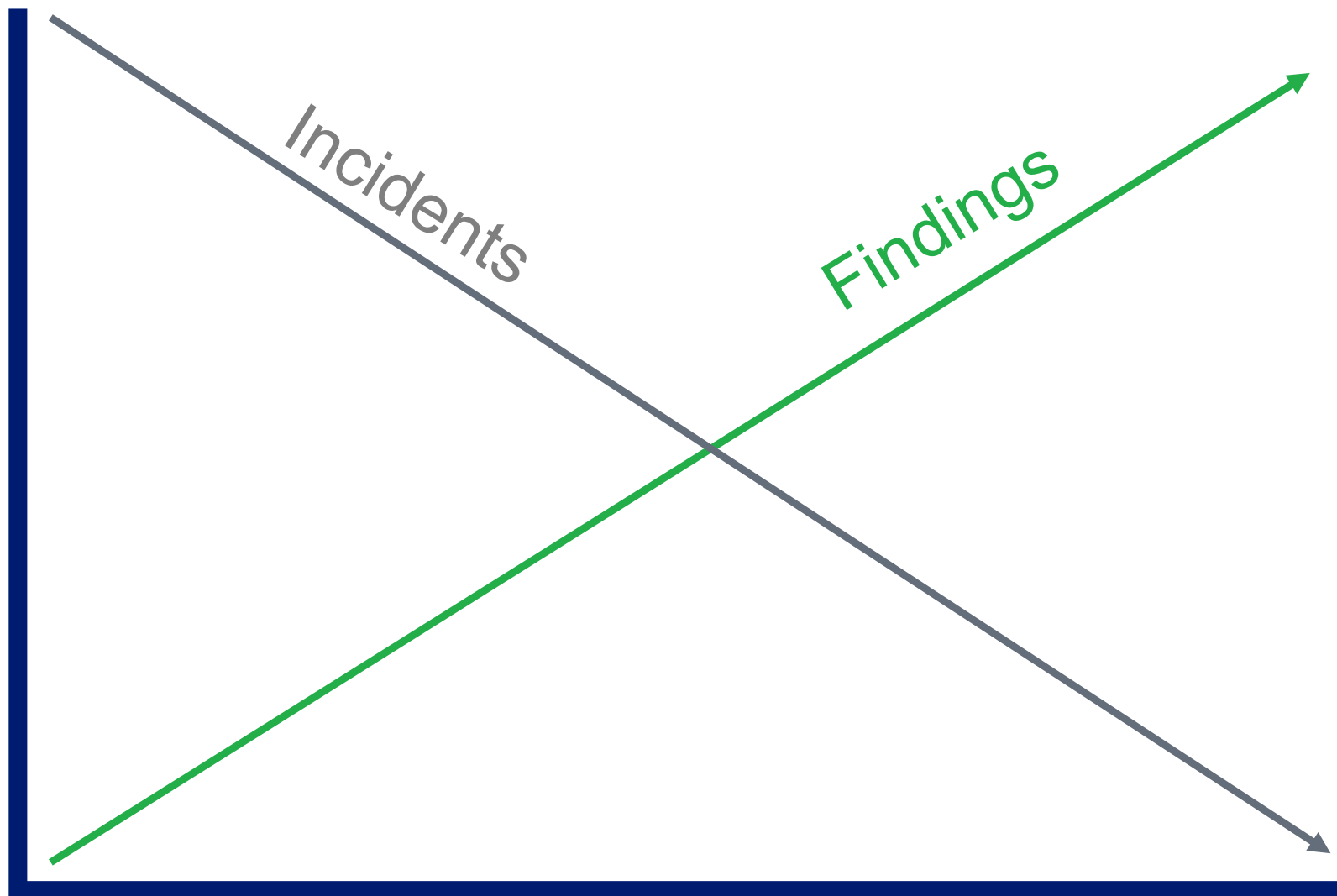




# DASHBOARD



# EXPECTED TREND



# WE COUNT ON YOU!

The Safety, Health and Security of our people, customers and communities,  
at the center of everything we do...



FOR A SAFE, SECURE AND HEALTHY  **SEMPRA**  
INFRASTRUCTURE





Have a  
**great day**

---

**Be safe!**